

Brief description:

The STAND.CONNECT CC bridges the gap between your control system and your PC.

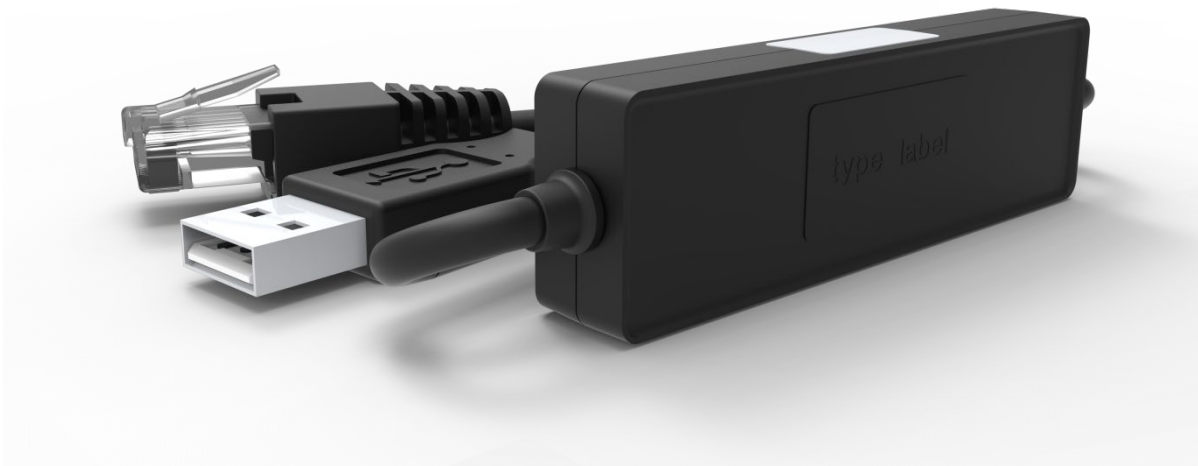
With the help of the appropriate PC software, you can monitor your controller's system status on-screen and set it according to your requirements.

Characteristics:

- ✓ Plug & Play capable
- ✓ No installation of a driver is required
- ✓ Compatible with Windows® 7, 8, 10
- ✓ Compatible with STAND.CONTROL C1
- ✓ USB 2.0 connection

OMIT

STAND.CONNECT CC



Specifications:

dimensions (L x B x H)	71.5 x 21 x 11 mm 2,815 x 0.83 x 0.43 “
weight	0.044 kg
Environment conditions during transport and storage	-25 °C to +70 °C at 5 % to 90 % relative atmospheric humidity (non-condensing), with +38 °C max. dew point; Temperatures from +55 °C to +70 °C only for maximum 24h
Environment conditions in the factory	+5 °C to +40 °C at 10 % to 85 % relative atmospheric humidity (non-condensing), with +27 °C max. dew point;
IP class (protection class as per EN 60529)	IP 20
connections	USB 2.0 RJ45 plug

