

Brief description:

With STAND.CONNECT Hub you will expand your control system. What initially appears limited, becomes limitless through the STAND.CONNECT Hub.

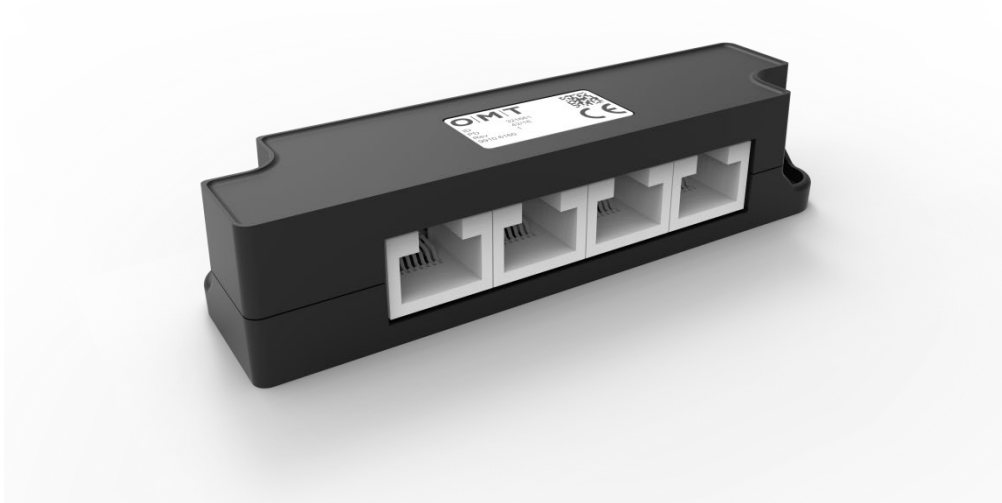
You can connect any type of accessory to the STAND.CONNECT Hub that you can also connect to the control system.

Characteristics:

- ✓ Individually usable
- ✓ Plug & Play capable
- ✓ Compatibility with STAND.CONTROL C1

O|MIT

STAND.CONNECT HUB



Specifications:

dimensions (L x B x H)	98 x 26 x 22 mm
	3.86 x 1.02 x 0.87 "
weight	0.029 kg
Environment conditions during transport and storage	-25 °C to +70 °C at 5 % to 90 % relative atmospheric humidity (non-condensing), with +38 °C max. dew point; Temperatures from +55 °C to +70 °C only for maximum 24h
Environment conditions in the factory	+5 °C to +40 °C at 10 % to 85 % relative atmospheric humidity (non-condensing), with +27 °C max. dew point;
IP class (protection class as per EN 60529)	IP 20
connections	4x RJ45 sockets

